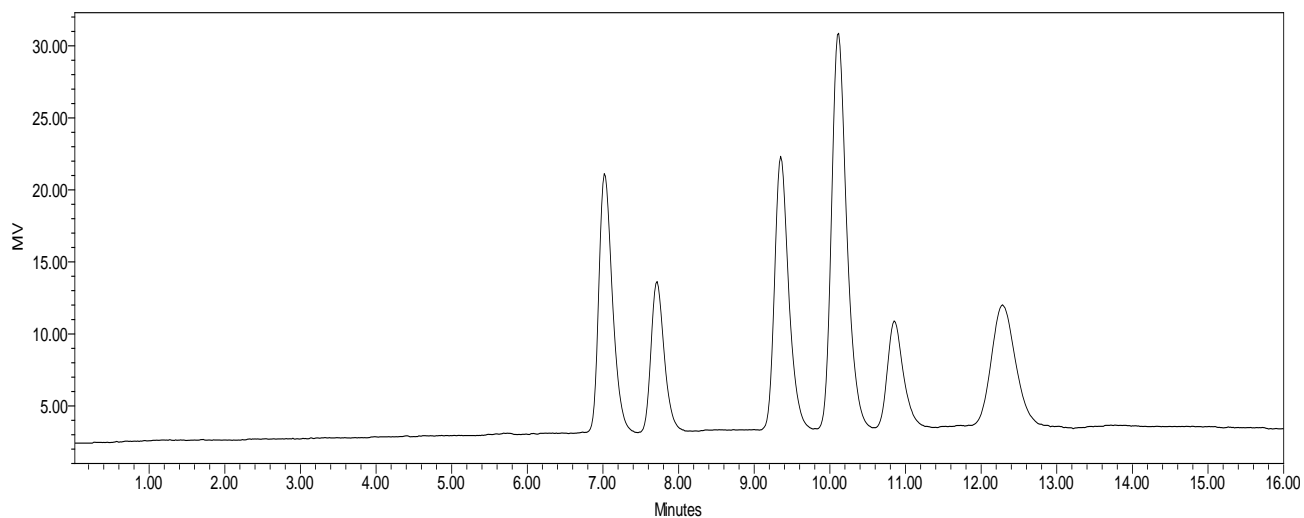




## Analysis of Carbohydrates on Carbomix<sup>®</sup>-Na (5 $\mu$ m, 8%, 7.8x300 mm)



Column: Carbomix<sup>®</sup> Na-NP5 (5  $\mu$ m, 8% crosslinkage, 7.8x300 mm)  
Mobile Phase: water  
Temperature: 75 °C  
Flow Rate: 0.6 mL/min  
Detection: RI  
Sample Injection: 5  $\mu$ L  
Samples: 1. Stachyose 2. Cellobiose 3. Glucose 4. Fructose 5. Arabinose 6. Ribose

Keywords: Carbohydrate, Carbomix, sodium form