

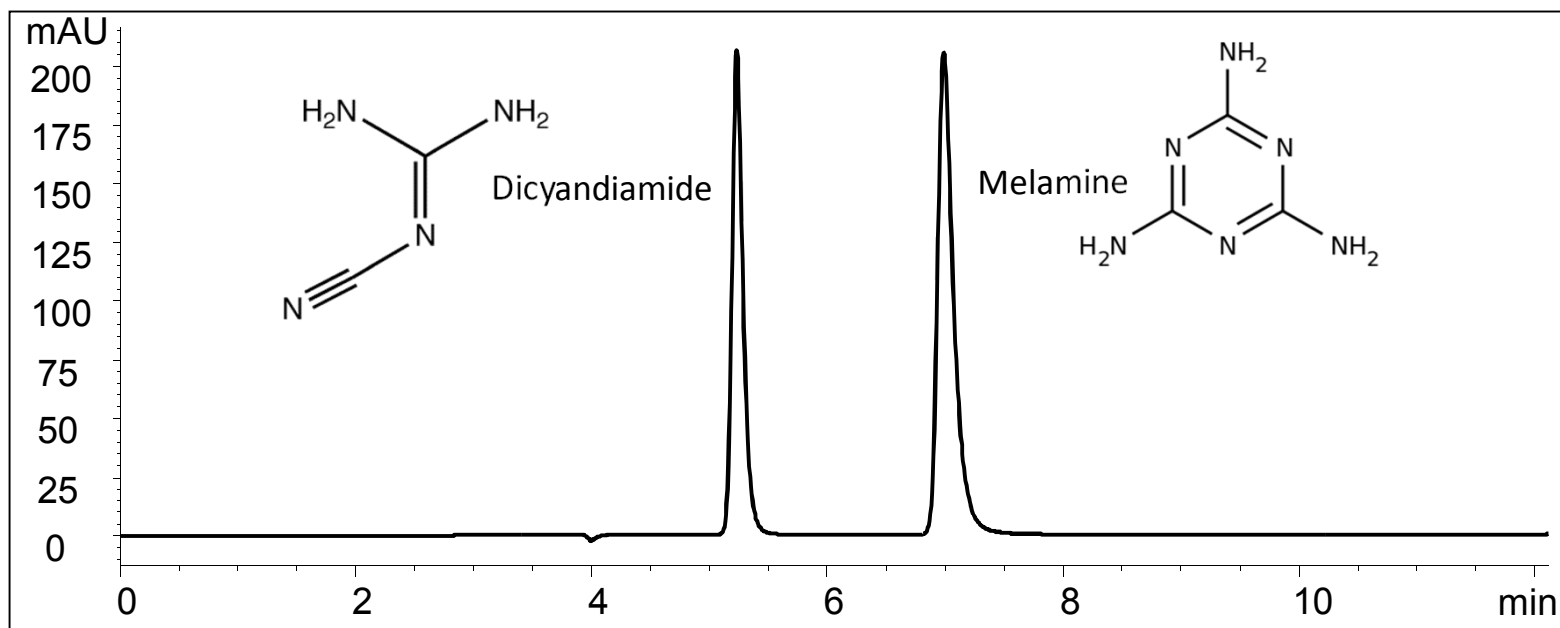
Dicyandiamide and Melamine Analysis on HP-SCX (4625)

Column: HP-SCX (5 μm , 120 \AA , 4.6 x 250 mm)

Mobile phase: 10 mM NH_4Ac (pH 6.68)

Flow rate: 0.8 mL/min, Detector: UV 218 nm, Column temperature: 30 $^\circ\text{C}$,

Injection volume: 1 μL , Pressure: 85 bar



Compound Name	RT [min]	Height	Area	Area %	Plates	Tailing	Resolution
Dicyandiamide	5.23	206	1361	40.856	15778	1.32	
Melamine	6.99	206	1971	59.144	13948	1.60	8.69

