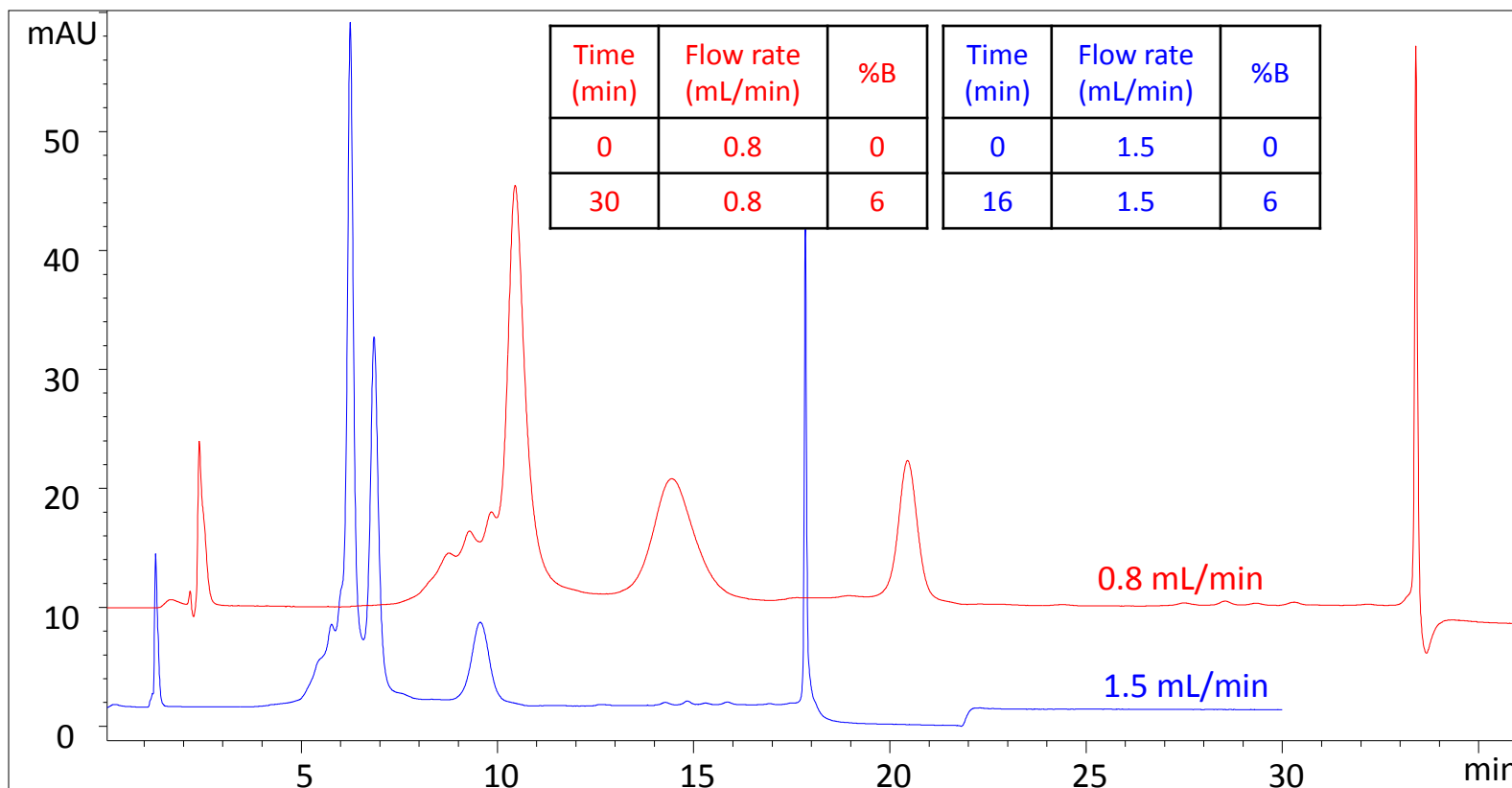


# Proteomix<sup>®</sup> SCX for MAb 016 at different flow rates

Columns: Proteomix<sup>®</sup> SCX NP5 4.6 x 250 mm, PEEK, flow rate: 0.8 mL/min and 1.5 mL/min

Mobile phase: A: 20 mM phosphate buffer, pH 7.5 and B: A + 1 M NaCl, Detection: UV 280 nm, Sample: MAb 016 (11.8 mg/mL) 4  $\mu$ L



**\*With phosphate buffer and MAb 016, increasing the flow rate does not provide the same separation resolution. So it is sample and mobile phase dependent using a higher flow rate for faster analysis without sacrificing resolution.**