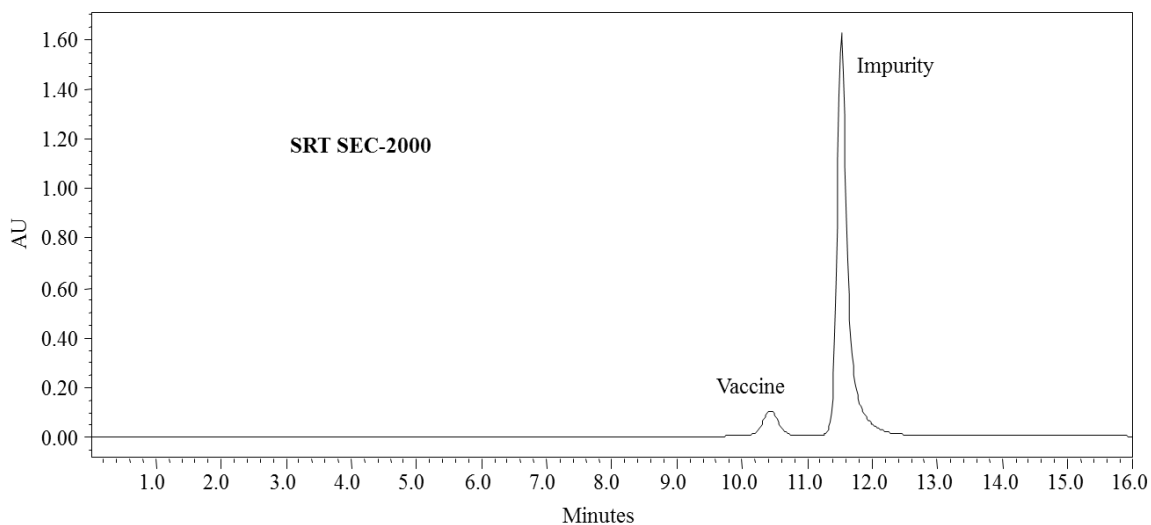




Analysis of Vaccine Sample on SRT[®] SEC-2000



Column: SRT[®] SEC-2000
Mobile phase: 150 mM phosphate buffer, pH 7.0
Flow rate: 1.0 mL/min
Temperature: 25°C
Sample injection: 20 μ L
Sample: Vaccine (target MW ~80,000 KD) and impurity (details undisclosed by collaborator)

Keywords: size exclusion, SRT, SRT 2000, vaccine